



# **BROWARD HIV HEALTH SERVICES PLANNING COUNCIL**

## **PSRA Data Workshops Day 1**

**Monday, May 18, 2026  
10:00AM to 4:00PM**

**Broward Regional Health Planning  
Council (BRHPC)**





FORT LAUDERDALE/BROWARD EMA  
BROWARD HIV HEALTH SERVICES PLANNING COUNCIL  
A BOARD OF THE BROWARD COUNTY BOARD OF COUNTY COMMISSIONERS  
200 OAKWOOD LANE, SUITE 100, HOLLYWOOD, FL 33020  
(954) 561-9681 • FAX (954) 561-9685

## Priority Setting & Resource Allocation Committee Workshop Day 1

Monday, May 18, 2026 – 10:00 AM

[Click Here to Join the Priority Setting and Resource Allocation Committee Meeting](#)

Meeting ID: 251 437 066 890 59

Passcode: ud69mG6Y

Dial in by phone

[+1 469-998-5921](tel:+14699985921), [703542346#](tel:+1703542346) United States, Dallas

[Find a local number](#)

Phone conference ID: 703 542 346#

Chair: Brad Barnes • Vice Chair: Dr. Mark Schweizer

***This meeting is audio and video recorded.***

### ORDER OF BUSINESS

- I. Call to Order
- II. Welcome from the Chair:
  - a. Meeting Ground Rules
  - b. Statement of Sunshine
  - c. Introductions & Abstentions
  - d. Moment of Silence
- III. Public Comment
- IV. **ACTION ITEM:** Approval of Agenda for May 18, 2026
- V. **UPDATE:** Approval of Minutes from April 9, 2026, *tabled till June 18, PSRA Meeting*
- VI. Public Comment

### Workshop Day 1

- a. **Presentation:** Review of Service Categories; *Recipient Office (20 Minutes)* **(Handout A)**
- b. **Presentation:** Ryan White Funder and Stakeholders *(30 Minutes per Agency)*
  - Part B **(Handout B)**
  - Part C **(Handout C)**
  - Part D **(Handout D)**
  - Part F **(Handout E)**
- c. **Break:** Lunch
- d. **Presentation:** EHE Presentation; *Part A Representative (30 Minutes)* **(Handout F)**
- e. **Break:** Stretch Break
- f. **Update:** Review the Status of the FL and Broward Integrated Plan; *Planning Council Support Staff (15 Minutes)*
- VII. Recipient Report

VIII. **Next Meeting Dates:**

- a. **PSRA Workshops:** Tuesday, May 19<sup>th</sup> and Wednesday, May 20<sup>th</sup> ;10AM to 4:00PM. Location: Broward Regional Health Planning Council (BRHPC) and online via Microsoft Teams.
- b. **Regular PSRA Meeting:** June 18, 2026, 9:30 AM to 12:30 PM. Location: Microsoft Teams and BRHPC

IX. Announcements

X. Adjournment

*For a detailed discussion on any of the above items, please refer to the minutes available at: [HIV Planning Council Website](#)*

*Please complete your [meeting evaluation](#).*

*Three Guiding Principles of the Broward County HIV Health Services Planning Council*  
• Linkage to Care • Retention in Care • Viral Load Suppression •

Vision: To ensure the delivery of high-quality, comprehensive HIV/AIDS services to low-income and uninsured Broward County residents living with HIV, by providing a targeted, coordinated, cost-effective, sustainable, and client-centered system of care.

Mission: We direct and coordinate an effective response to the HIV epidemic in Broward County to ensure high-quality, comprehensive care that positively impacts the health of individuals at all stages of illness. In so doing, we: (1) Foster the substantive involvement of the HIV-affected communities in assuring consumer satisfaction, identifying priority needs, and planning a responsive system of care, (2) Support local control of planning and service delivery, and build partnerships among service providers, community organizations, and federal, state, and municipal governments, (3) Monitor and report progress within the HIV continuum of care to ensure fiscal responsibility and increase community support and commitment.

[Broward County Board of County Commissioners](#)

Mark D. Bogen (**Mayor**) • Robert McKinzie (**Vice-Mayor**) • Nan H. Rich • Michael Udine • Lamar P. Fisher • Steve Geller • Beam Furr • Alexandra



# May 2026

## Broward HIV Health Services Planning Council Calendar



All events listed on this calendar are free and open to the public. Meeting dates and times are subject to change. Please contact support staff at [hivpc@brhpc.org](mailto:hivpc@brhpc.org) or (954) 561-9681 ext. 1244/1343. Visit [HIV Health Service Planning Council](#) for updates.

SUNDAY	MONDAY	TUESDAY	WEDNESDAY	THURSDAY	FRIDAY	SATURDAY
					1	2 
3	4	5 <a href="#">Community Empowerment Committee (CEC)</a> 3:00PM - 5:00PM	6	7 <a href="#">System of Care Meeting (SOC)</a> 9:30AM - 11:30AM	8	9
10 	11	12	13	14 <a href="#">Local Pharmacy Assistance Committee (LPAC)</a> 2:00PM - 4:00PM	15 <a href="#">Integrated Planning Work Group (IP)</a> 11:30AM - 2:30PM	16
17	18 <a href="#">PSRA Data Presentation Workshop Day 1</a> 10:00AM - 4:00PM 	19 <a href="#">PSRA Data Presentation Workshop Day 2</a> 10:00AM - 4:00PM	20 <a href="#">PSRA Data Presentation Workshop Day 3</a> 10:00AM - 4:00PM <a href="#">Quality Network Meeting (CQM)</a> 10:00AM - 11:15AM In-Person	21 <a href="#">Executive Committee Meeting</a> 12:45PM - 2:45PM	22	23
24	25 	26	27	28 <a href="#">HIV Planning Council Meeting</a> 9:30AM to 11:30AM	29 <a href="#">Medical Case Management Meeting (CQM)</a> 2:30PM - 3:45PM	30 
31						

Broward Regional Health Planning Council (BRHPC):  
200 Oakwood Lane, Suite #100, Hollywood, FL 33020  
Links are active and lead to meetings or Awareness Day Information. **Information is subject to change.**

Meetings in **RED** are canceled. Meetings in **BLUE** are for the HIV Planning Council Committees. Meetings in **GREEN** are for the Provider Network. Holidays and meetings outside of the HIV Planning Council are in **BLACK**.

# May 2026

## Broward HIV Health Services Planning Council Calendar



All events listed on this calendar are free and open to the public. Meeting dates and times are subject to change. Please contact support staff at [hivpc@brhpc.org](mailto:hivpc@brhpc.org) or (954) 561-9681 ext. 1244/1343. Visit **HIV Health Service Planning Council** for updates.

<p>TODOS ESTAN BIENVENIDOS!</p>	<p>ALL ARE WELCOME!</p>	<p>BON VINI!</p>
<p>A menos que se anote de forma diferente en el calendario, todas las reuniones se realizarán en: Broward Regional Health Planning Council (BRHPC): 200 Oakwood Lane, Suite #100, Hollywood, FL 33020</p> <p>Para confirmar información acerca de la reunión de Consejo de Planeación HIV, o confirmar la reserva de servicios especiales tales como: Traducción Inglés a Español o a Criollo (Haitiano), servicios para discapacitados en visión o audición, por favor llame con 48 horas de antelación para que puedan hacerse los arreglos necesarios.</p>	<p>Unless otherwise noted on the calendar, all meetings are held at: Broward Regional Health Planning Council (BRHPC): 200 Oakwood Lane, Suite #100, Hollywood, FL 33020</p> <p>To confirm HIV Planning Council meeting information, or reserve special needs services such as Translation from English to Spanish or Creole, or are hearing or visually impaired, please call 48 hours in advance so that arrangements can be made for you.</p>	<p>Sòf si yo ta ekri yon lòt bagay nan almanak-la, tout rankont-yo ap fèt: Broward Regional Health Planning Council (BRHPC): 200 Oakwood Lane, Suite #100, Hollywood, FL 33020</p> <p>Pou konfime enfòmasyon ou resewva sou rankont Konsèy Planifikasyon HIV-a, oswa pou rezève sèvis pou bezwen Espesyal tankou: Tradiksyon angle an panyòl oswa kreyòl; oswa, si ou gen pwoblèm wè oswa tandè, rele 48 tè alavans pou yo ka fè aranjman pou ou.</p>
<p><b>HIVPC Committee Descriptions</b></p>		
<p><b>HIV Health Services Planning Council (HIVPC):</b> Continuously monitors, evaluates, and improves the quality of HIV care for Ryan White Part A and MAI-funded patients.</p>		
<p><b>Executive Committee (EXEC):</b> Oversees the HIV Integrated Prevention and Care Plan, work of HIVPC committees, recommendations, and grievance resolution. Sets HIVPC agendas, manages conflicts of interest, and review attendance.</p>		
<p><b>Priority Setting and Resource Allocation Committee (PSRA):</b> Recommends priorities and allocates Ryan White Part A funds based on data review. Develops, monitors, and refines eligibility, service definitions, and strategies to meet community needs.</p>		
<p><b>Quality Management Committee (QMC):</b> Ensures high-quality HIV care by developing outcomes and indicators. Oversees standards of care, evaluates programs, assesses client satisfaction, and training.</p>		
<p><b>Membership/Council Development Committee (MCDC):</b> Recruits and screens applicants to ensure the Council meets demographic requirements. Provides recommendations, orientation, training for new members.</p>		
<p><b>Community Empowerment Committee (CEC):</b> Engages in community outreach to Ryan White Part A consumers to inform them about opportunities to participate in the HIV Planning Council and provide input.</p>		
<p><b>System of Care Committee (SOC):</b> Evaluates the system of care and the impact of policies on people living with HIV in Broward County. Plans and coordinates care across diverse groups to improve access and reduce disparities.</p>		



Handout A

# Broward County Ryan White Part A Services Overview

Presented by Ryan White Part A Recipient Office



# Ryan White Program Services



Currently Provided Service =

Ryan White Services	Part A	Part B	Part C	EHE
<b>Core Medical Services</b>				
AIDS Drug Assistance Program Treatments (ADAP)		•		
AIDS Pharmaceutical Assistance (Local)	•			
Early Intervention Services			•	
Health Insurance Premium & Cost-Sharing	•	•		
Home and Community-Based Health		•		
Home Health Care				
Hospice Services				
Medical Case Management	•			•
Medical Nutrition Therapy	•	•		
Mental Health Services	•			
Oral Health Care	•			
Outpatient Ambulatory Health Services	•			
Substance Abuse Services (Outpatient)	•			
<b>Support Services</b>				
Child Care Services				
Emergency Financial Assistance	•	•		
Food Bank	•	•		•
Health Education				
Housing Services				•
Linguistic Services				
Medical Transportation		•		•
Non – Medical Case Management	•	•		•
Other Professional Services	•			
Outreach Services				
Psychosocial Support Services				
Referral for Health Care / Supportive Services				
Rehabilitation Services				
Respite Care				
Substance Abuse Services (Residential)		•		

# Core Medical Services

Refers to services deemed most necessary to ensure positive medical outcomes for people living with HIV/AIDS





# Core Medical Services List



1. AIDS Drug Assistance Program  
Treatments (ADAP)

2. AIDS Pharmaceutical Assistance  
(Local)

3. Early Intervention Services (EIS)

4. Health Insurance Premium & Cost-  
Sharing Assistance (HICP)

5. Home & Community-Based Health  
Services

6. Home Health Care

7. Hospice Services

8. Medical Case Management

9. Medical Nutrition Therapy

10. Mental Health Services

11. Oral Health Care

12. Outpatient Ambulatory Health  
Services

13. Substance Abuse Outpatient Care

## AIDS Drug Assistance Program (ADAP) Treatments

---

- Administered by the state through RWHAP Part B, but Part A program can contribute funds.
- Provides HIV-related medications to low-income clients living with HIV; can also provide access to medications by using program funds to purchase health insurance coverage and through medication cost sharing;



## AIDS Pharmaceutical Assistance [Local]

---

- Currently funded by the Ryan White Part A program
- Serves as a supplemental local source of medication assistance that can be used when ADAP has a restricted formulary, a waiting list, or restricted financial eligibility criteria.



## Early Intervention Services

---



- Currently funded by the Ryan White Part C program
- Includes a combination of services designed to identify individuals with HIV and help them access services
- Can serve newly diagnosed as well as PWH who know their status, but are not in care
- This is the only RWHAP service category that can pay for HIV testing

## Health Insurance Premium & Cost Sharing

---

- Currently funded by the Ryan White Part A and Part B programs
- Provides financial assistance to enable PWH to maintain health insurance or standalone dental insurance by paying their premiums or other cost-sharing expenses, including co-pays, deductibles, and funds to contribute to a client's Medicare Part D true out-of-pocket costs (TrOOP)



## Home & Community-Based Health Services

---



- Currently funded by the Ryan White Part B program
- Provides services in the home or in community settings based on a medical care team's written plan of care; services may include mental health, developmental, and rehabilitation services; day treatment or partial hospitalization; durable medical equipment; and/or home health aide and personal care services in the home.

## Home Health Care

---

- **Not Funded**
- Supports medical-related services provided in the home by licensed medical professionals, such as administration of prescribed treatments, preventive and specialty care, and routine diagnostic testing



## Hospice Services

---

- Not Funded
- Provides end-of-life services to clients in the terminal stage of HIV-related illness, at home or in a residential facility



## Medical Case Management

---

- Currently funded by the Ryan White Part A program
- Provides client-centered activities designed to improve health outcomes, such as assessment of service needs, development and updating of an individualized care plan, coordinated access to medical care and support services, continuous client monitoring, treatment adherence counseling, and sometimes assistance in accessing public and private benefits for which the client may be eligible.



## Medical Nutrition Therapy

---

- Currently funded by the Ryan White Part A and B programs
- Provides nutritional assessment and screening, evaluation, education and/or counseling, and food and/or nutritional supplements, all based on a medical provider's referral and on a nutritional plan developed by a registered dietitian or other licensed nutrition professional.



## Mental Health Services

---

- Currently funded by the Ryan White Part A program
- Provides psychological and psychiatric screening, assessment, diagnosis, treatment, and counseling in an individual or group setting by a licensed mental health professional (usually a psychiatrist, psychologist, or licensed clinical social worker).



## Oral Health Care

---



- Currently funded by the Ryan White Part A program
- Supports outpatient diagnostic, preventive, and therapeutic oral health services by dental health care professionals based on an oral health treatment plan
- Broward County's RWHAP Oral Health Care services funding is separated into two components:
  - Routine Maintenance Care
  - Specialty Care

## Outpatient/Ambulatory Health Services (OAHS)

---

- Currently funded by the Ryan White Part A program
- Supports diagnostic and therapeutic services, such as primary care, diagnostic testing including laboratory testing, treatment adherence, and specialty services provided directly to a client by a licensed healthcare provider in an outpatient medical setting.



## Substance Abuse Outpatient Care

---



- Currently funded by the Ryan White Part A program
- Provides outpatient services for the treatment of drug or alcohol use disorders, including both drug-free treatment and counseling and medication-assisted therapy.
- Includes harm reduction; can include syringe access services that meet current appropriations law and applicable HHS-, HRSA-, and HAB-specific guidance; does not include the purchase of syringes.

# Support Services

Refers to essential, non-clinical services that can increase a patient's access to health care.



1. Child Care Services

2. Emergency Financial Assistance (EFA)

3. Food Bank

4. Health Education

5. Housing Services

6. Linguistic Services

7. Medical Transportation

8. Non – Medical Case Management Services

9. Other Professional Services

10. Outreach Services

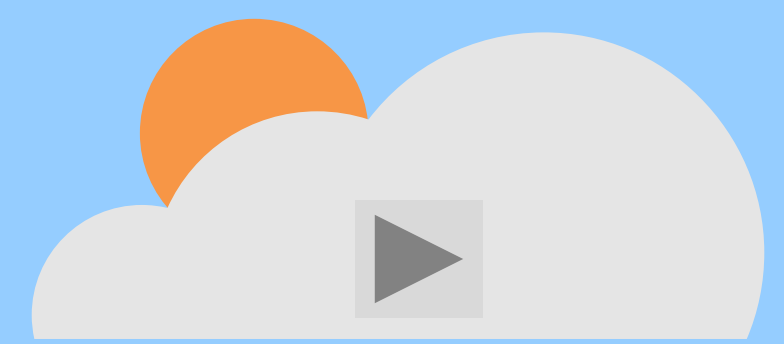
11. Psychosocial Support Services

12. Referral for Health Care & Support Services

13. Rehabilitation Services

14. Respite Services

15. Substance Abuse Services (Residential)



# Support Services



## Child Care Services

---



- **Not Funded**
- Pays for intermittent services for children living in the household of clients with HIV so they can attend medical visits, related appointments, and/or RWHAP-related meetings, groups, or training sessions.
- Can be provided by a licensed or registered childcare provider or informal childcare provided by a neighbor, family member, or other person.

## Emergency Financial Assistance (EFA)

---

- Currently funded by the Ryan White Part A and Part B programs
- Provides limited one-time or short-term payments to assist RWHAP clients with an urgent need for essential items or services necessary to improve health outcomes, including utilities, housing, food (including groceries and food vouchers), transportation, medication not covered by an ADAP or LPAP, or another RWHAP-allowable cost.



## Food Bank

---

- Currently funded by the Ryan White Part A & Ending the HIV Epidemic (EHE) program: Food Bank and Food Vouchers
- Currently funded by the Ryan White Part B productive: Home Delivered Meals
- Provides food items, hot meals, or a voucher program to purchase food.
- Can be used for essential non-food items limited to personal hygiene products and household cleaning supplies, plus water filtration/purification systems in communities with water safety issues.



## Health Education & Risk Reduction (HERR)

---

- **Not Funded**
- Provides education to PLWH about HIV transmission and how to reduce risk, and information about services to improve their health status.
- Includes treatment adherence services provided as a stand-alone activity.



## Housing Services

---



- Funded under the Ryan White Part A and EHE programs
- Provides transitional, short-term, or emergency housing assistance to enable a client or family to gain or maintain health services and treatment, including temporary assistance necessary to prevent homelessness and to gain or maintain access to medical care.
- Also includes housing referral services, including assessment, search, placement, and housing advocacy services, and related fees.

## Linguistic Services

---

- **Not Funded**
- Provides oral interpretation and written translation services by qualified providers when necessary to facilitate communication between the provider and client and/or support delivery of RWHAP-eligible services.



## Medical Transportation

---

- Currently funded by the Ryan White Part B program
- Provides nonemergency transportation services so clients can access or be retained in core medical and support services; can use various methods, including contracts with transportation providers, non-cash mileage reimbursement, purchase or lease of organizational vehicles for client transportation, voucher or token systems, and organization and use of volunteer drivers.



## Non-Medical Case Management Services

---



- Currently funded by the Ryan White Part A & Part B programs
- Supports client-centered activities focused on improving access to and retention in needed core medical & support services.
- Provides coordination, guidance, and assistance in accessing medical, social, community, legal, financial, employment, vocational, and other needed services, and sometimes help in accessing public and private programs for which clients may be eligible, based on activities such as an initial assessment of service needs, development and regular re-evaluation of an individualized care plan, client monitoring, and timely and coordinated access to medically appropriate levels of health and support services and continuity of care.

## Other Professional Services

---

- **Currently Funded by the Ryan Part A program (Legal Services)**
- Supports professional and consultant services, including legal services, permanency planning, and income tax preparation services to assist clients in filing Federal tax returns that are required by the Affordable Care Act for all individuals receiving premium tax credits.



## Outreach Services

---



- **Not Funded**
- Identifies PLWH who either do not know their HIV status or know their status but are not currently in care and carries out activities to link or re-engage PLWH who know their status into RWHAP services, including the provision of information about health care coverage options.

## Psychosocial Support Services

---



- **Not Funded**
- Provides group or individual support and counseling services to assist clients to address behavioral and physical health concerns, including support groups, nutrition counseling provided by a non-registered dietitian, and other types of counseling
- Does not require that services be provided by a licensed mental health professional (See Mental Health Services).

## Referral for Healthcare and Supportive Services

---



- **Not Funded**
- Supports referral of clients to needed core medical or support services in person or through telephone, written, or other types of communication; may also include referrals to assist clients in obtaining access to public or private benefits programs for which they may be eligible.

## Rehabilitation Services

---

- **Not Funded**
- Provides HIV-related therapies, including physical, occupational, speech, and vocational therapy, intended to improve or maintain a client's quality of life and optimal capacity for self-care on an outpatient basis.



## Respite Care

---

- **Not Funded**
- Provides periodic non-medical care for clients in community or home-based settings, designed to provide care for an HIV- infected client to relieve the primary caregiver responsible for the day-to-day care of an adult or minor living with HIV.



## Substance Abuse Services (Residential)

---

- Currently funded by the Ryan White Part B program
- Provides services for the treatment of drug or alcohol use disorders in a residential setting, including screening, assessment, diagnosis, and treatment, based on a written referral from the clinical provider as part of a RWHAP-funded substance abuse disorder treatment program.
- Includes detoxification if offered in a separate licensed residential setting.



# References

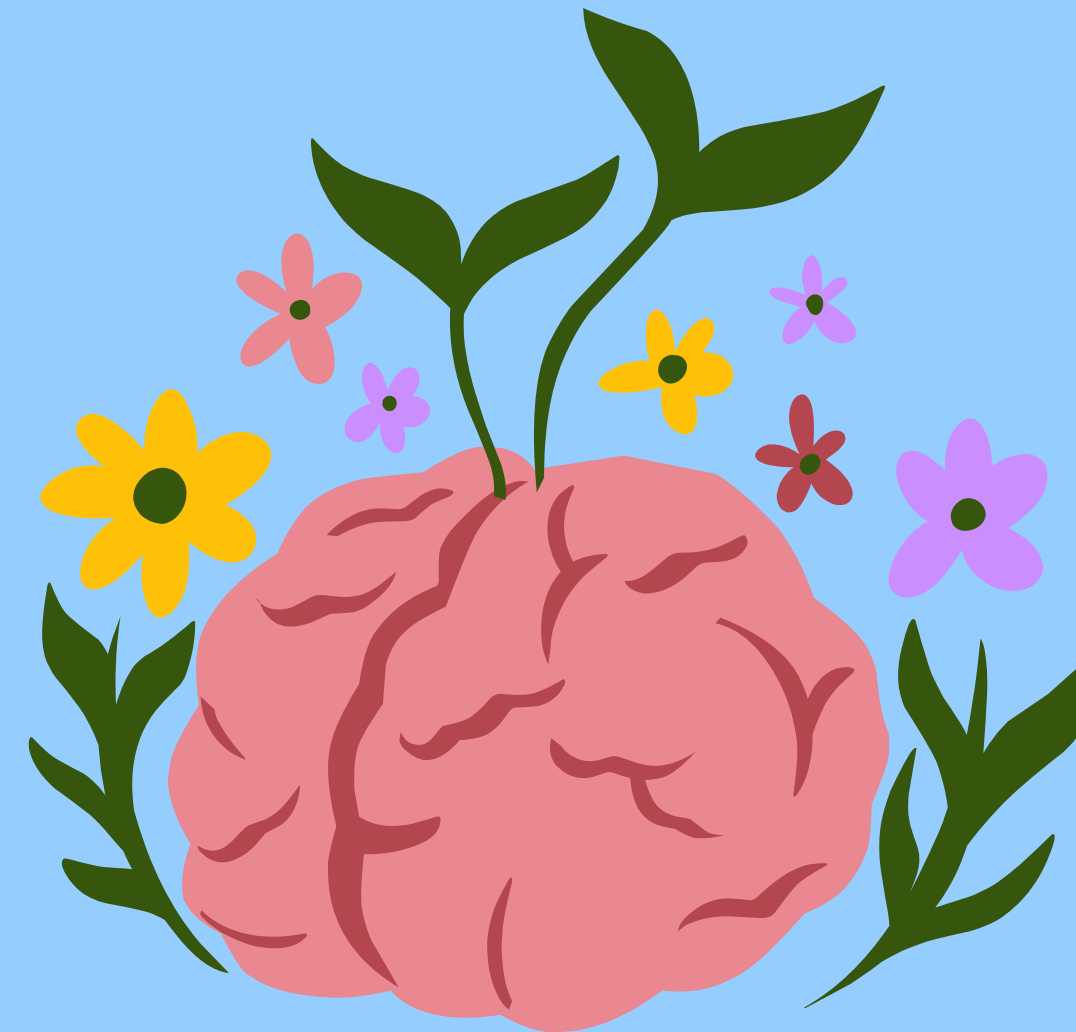
---

Ryan White HIV/AIDS Program Services: Eligible Individuals & Allowable Uses of Funds Policy Clarification Notice (PCN) #16-02 (Revised 10/22/18).

Available at: [https://hab.hrsa.gov/sites/default/files/hab/program-grants-management/ServiceCategoryPCN\\_16-02Final.pdf](https://hab.hrsa.gov/sites/default/files/hab/program-grants-management/ServiceCategoryPCN_16-02Final.pdf).

Frequently Asked Questions for Policy Clarification Notice 16-02. Available at: [https://hab.hrsa.gov/sites/default/files/hab/Global/faq\\_service\\_definitions\\_pcn\\_final.pdf](https://hab.hrsa.gov/sites/default/files/hab/Global/faq_service_definitions_pcn_final.pdf)

Broward County Florida Department of Health, Ryan White Part B Report to the HIV Health Services Planning Council.





**Questions?**

**Handout B**

# Florida Department of Health

## **Ryan White Funders Presentation Ryan White Part B**

**Florida  
HEALTH**

**May 2026**

# Presenter



## **Serena R. Cook**

Ryan White Part B Program Manager  
Florida Department of Health in Broward County (DOH-  
Broward)

# Ryan White Funders Presentation

## Ryan White Part B (RWPB)

Federal mandate that provides funding to states and territories to improve the quality, accessibility, and organization of HIV care and support services, particularly for individuals who are uninsured or underinsured.

- RWPB is designed to be the “payer of last resort.”
- Part B funds can be used for a range of core medical and support services that improve access or retention in care.
- To be eligible for services covered under the program, a person must be HIV positive, a resident of Broward County, and meet the criterion of 400% or lower of the federal poverty level.

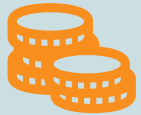
# Ryan White Funders Presentation



## **Fiscal Year 2025-26**

Program Budget: \$1,161,929

Fully Expended



## **Fiscal Year 2026-27**

Program Budget: Same Allocation for 2025-26

# Ryan White Funders Presentation

## **RWPB Assists Clients with the Following Services:**

- Emergency financial assistance
- HICP
  - Medication copayment
- Community-based home health services
- Home-delivered meals
- Nutritional supplements
- Medical transportation services (bus passes/gas cards)
- Substance misuse services-detox and residential

# Ryan White Funders Presentation

## Emergency Financial Assistance

- These are limited one-time or short-term payments capped at \$4,000 annually to assist the Ryan White clients with an emergent need.
- To receive rent and/or utility assistance, the lease and/or bill must be in the client's name.

# Ryan White Funders Presentation

Service	Components
Essential utilities: electric/water/gas	Authorization sent to third-party payer Same day pay and confirmation Denial/approval letter sent to client
Housing: rent/move-in payment (first and last month)	W-9 and landlord statement completed by property manager Authorization sent to third-party payer Denial/ approval letter sent to client
Food vouchers	Client reports need for food assistance
Medication	Emergency case-by-case basis
Transportation	Emergency case-by-case basis

# Ryan White Funders Presentation

Service Category	Unduplicated Client Count	Units of Service
Emergency financial assistance	2,108	4,480
Food bank/home-delivered meals	1	85
Health Insurance Continuation Program (HICP)	261	527
Home and Community-Based Health Services	16	70
Medical nutritional therapy	37	1,854
Medical transportation services	537	1,479
Nonmedical case management	6,032	4,762
Substance abuse treatment	37	662

# Ryan White Funders Presentation

## Home and Community-Based Services

- This assists the client based on a plan of care strategy by client's case manager and physician.
- Referrals are done by case managers.

# Ryan White Funders Presentation

## Home and Community-Based Services Service Components

- **Home health aide/personal care/homemaker:** assists with daily cleaning and bathing, as needed
- **Wound care nurse:** assists client with chronic ulcer care
- **Durable medical equipment:**
  - Catheters
  - Surgical lubricant, oxygen tanks/refills
  - Shower chairs
  - Diapers and chucks

# Ryan White Funders Presentation

## Health Insurance Continuation Program

**Medication Copayment Program** provides monthly copayments for U.S. Food and Drug Administration-approved formulary medications to insured **clients who are ineligible** for the AIDS Drug Assistance Program (ADAP).

### Medication Copayment Service Components

- Clients choose one of the 28 participating pharmacies.
- Clients pick up medications monthly (RWPB-approved formulary).
- After applying copay cards, pharmacy bills RWPB for client's out-of-pocket expenses for formulary medications.
- RWPB receives monthly invoices from the providers.

# Ryan White Funders Presentation

## Health Insurance Continuation Program

Insurance Support Program assists with the service components of:

- Insurance premiums
- Deductibles
- Medical copayments

# Ryan White Funders Presentation

## Home-Delivered Meals

- Assists homebound clients based on a plan of care by client's case manager and physician
- Referrals are done by case managers.

# Ryan White Funders Presentation

## Home-Delivered Meals Service Components

- Home-delivered meals: alternative breakfast, lunch, and dinner
- Microwaveable meals delivered to clients
- Based on the physician and/or dietician's request
- Prescription required
- Tailored to client's dietary needs

The program is designed to assist clients short-term.

# Ryan White Funders Presentation

## Medical Nutritional Therapy

- Assists clients based on a plan of care from the client's case manager, nutritionist and/or physician
- Referrals are done by case managers.

# Ryan White Funders Presentation

## Medical Nutritional Therapy Service Components

- Nutritional supplement shakes: boost caloric intake
- Ensure/generic cases are delivered to the client by Walgreens Pharmacy
  - Based on the physician and/or dietician's request
  - Prescription required
  - Plan of care and/or chart note
  - Client does not have to be homebound.

Program is designed to assist clients short-term.

# Ryan White Funders Presentation

## Medical Transportation Services

RWPB staff issue bus passes to Ryan White Part A (RWPA) case management agencies for monthly distribution.

# Ryan White Funders Presentation

## Medical Transportation Services

### Service Components

- **All-day passes:** Clients with six or fewer appointments in a 30-day period
- **31-day passes:** Clients who exceed seven medical appointments in a 30-day period
- Clients can receive gas cards on a case-by-case basis
- Clients with Medicaid are **not eligible to participate** in medical transportation services

# Ryan White Funders Presentation

## Substance Abuse Services

- Provides detoxification and residential substance treatment services to clients at the Broward Addiction Recovery Center (BARC)
- Client must be a Broward County resident and at least 18 years old.

# Ryan White Funders Presentation

## Substance Abuse Services, Continued Service Components

- **Detoxification:** medically supervised inpatient detoxification-seven days per episode
- **Residential treatment services (RTS):** residential substance misuse treatment-30 days per episode

Additional 30 days of RTS can be requested via the RWPB program manager.

# Ryan White Funders Presentation

## Trends

- High walk-in rate
- High no-show rate
- Lost/stolen medication

# Ryan White Funders Presentation

## Program Updates

### Successes

- RWPB referral process
- Same-day phone assessments
- Client organization folders
- Implementation of DocuSign
- Text message reminders

### Challenges

- On-time recertification
- Client communication
- Home health aides

# Ryan White Funders Presentation

## Partnerships with RWPA Collaborations

- Integrated planning work group
- In-service trainings
- Case conferences

# Contact Information



## **Serena Cook**

Health Services Manager  
DOH-Broward  
954-412-7086  
Serena.Cook@FLHealth.gov

## **Claudine McLeary**

Government Operations Consultant I  
DOH-Broward  
954-412-7117  
Claudine.McLeary@FLHealth.gov

## **Ryan White Part B Referrals**

954-213-0623  
BrowardRWPartBProgram@FLHealth.gov



## Handout C

BROWARD  
HEALTHPOINT  
RYAN WHITE PART C  
PROGRAM

---



BROWARD  
HEALTHPOINT

---

## RYAN WHITE PART C PROGRAM

Shalisa Hafley, Manager of  
Outreach and Testing Services

❑ **Funding Amount:** \$818,133 (\$491,142 MAI  
Fundings)

❑ **Clients Served: 1,021**

### Funded Services:

- ❖ Comprehensive Primary Medical Care
- ❖ Early Intervention
  - Outreach
  - High Risk Targeted HIV Testing
  - Case Management

Services  
Provided

**Prevention & Clinical Care**

HIV Testing & Prevention service  
Primary/Specialty Medical Care  
Telehealth Services  
Clinical Pharmacy

**Care Coordination**

Case Management  
Medical Case Management  
Early Intervention Services

**Behavioral Health Services**

Psychiatry  
Counseling and Assessment

**Other Services**

Transportation (Uber Services/Bus  
Passes)  
Nutrition Services



**BROWARD  
HEALTHPOINT**



## Demographics

### Race:

- ❖ Black: (82.9%)
- ❖ White: (14.3%)
- ❖ American Indian: (.2%)
- ❖ Asian: (.3%)
- ❖ Unknown: (2.2%)

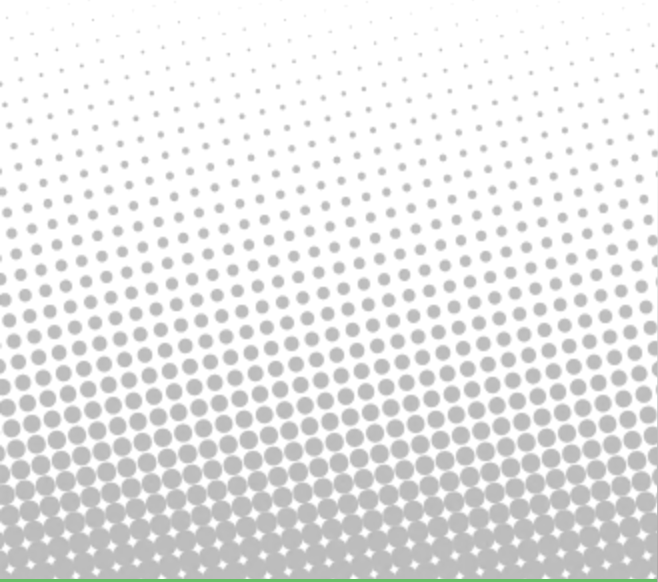

### Ethnicity

- ❖ Hispanic: 39.9%
- ❖ Non-Hispanic: 60%
- ❖ Unknown: .1%

### Gender:

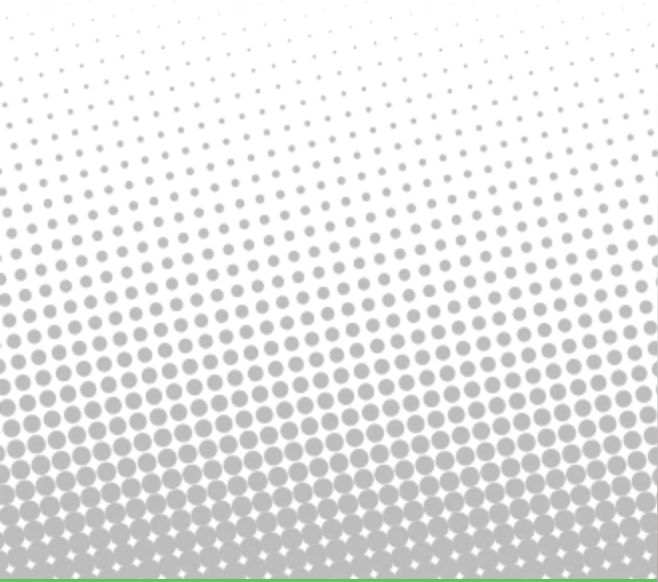
- ❖ Male: (70%)
- ❖ Female: (29.7%)
- ❖ Unknown: (.3%)

### Age:

- ❖ 59 & older: (39.7%)
  - ❖ 49-58: (22.5%)
  - ❖ 39-48: (20.1%)
  - ❖ 29-38: (14%)
  - ❖ 18-28: (.1%)
- 
- 

# Needs, Gaps, & Barriers To Care



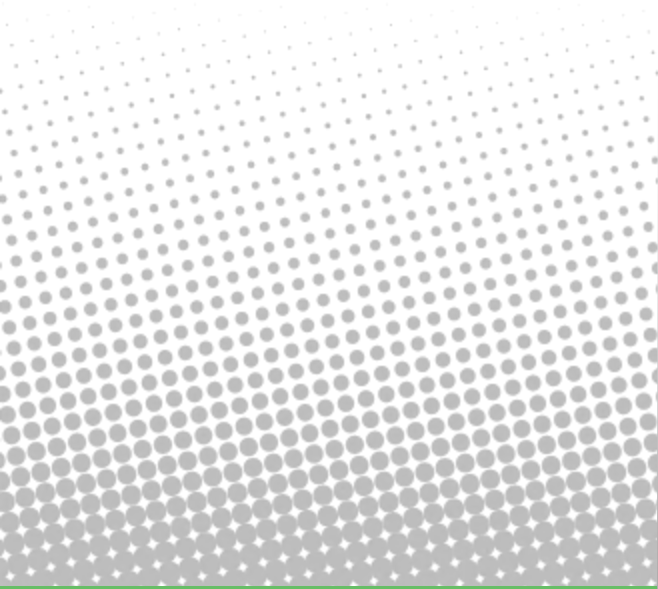
- Increasing number of clients who have fallen out of care and returning to care.
  - Limited phone access has made it difficult to maintain communication with clients for their follow-up care.
  - Increased Food Insecurity.
  - Lack of affordable housing; families at risk of becoming homeless due to economic hardship.
  - Navigating the ADAP changes.
  - Immigration changes.
- 

# RECOMMENDATIONS

---



- Extended hours for Ryan White eligibility appointments
- Access to life skills services



***THANK YOU***

---



**BROWARD  
HEALTHPOINT**



## Handout D

# BROWARD HEALTHPOINT RYAN WHITE PART D PROGRAM

---



# Ryan White Part D



Broward Health Point Ryan White Part D program focuses on providing access to coordinated family-centered primary medical care and support services for HIV-infected women, infants, children, and youth and their affected family members.

## **Client Eligibility**

Proof of Broward County Residency/Picture ID

Proof of HIV

Ryan White Eligible

---

## RYAN WHITE PART D PROGRAM

Bisiola Fortune- Evans,  
RW Part D Manager

❑ **FY2025 Funding Amount: 1,814,131**

❑ **Clients Served: 1644**

### Funded Services:

- ❖ Comprehensive outpatient family-centered core medical and specialty care to women, infants, children, and youth with HIV.
- ❖ Support Services aimed at improving HIV health outcomes by offering comprehensive case management, dedicated proactive outreach efforts, and access to essential resources to ensure patients receive the support they need for sustained health and well-being.

# Ryan White Part D Demographics

Demographic	Women (22 yrs & older)	Infant (Birth-18 months)	Children (2yrs-12yrs)	Youth (13yrs- 21yrs)
Total Individuals	87%	2%	3%	8%
Black	88%	80%	80%	85%
White(Non- Hispanic)	5.9%	4%	3%	2.0%
Hispanic	6.3%	10%	12.5	10%
Other	0.3%	5%	2.5%	2%

# Ryan White Part D



**Viral Load Suppression** The percentage of client with HIV infection who have viral load suppression during the measurement year

Youth 90%

Adult 92%

**Retention in Care- Youth-** The percentage of HIV infected youth, 13-21, attending a medical provider (BHP or community) who had two (six months apart) or more visit in the year.

Actual 90%

**Retention in Care- Adult-** The percentage of HIV infected patients attending BHP clinic, who had two (six months apart) or more visit in the year.

Actual 92%



---

# RYAN WHITE PART D PROGRAM

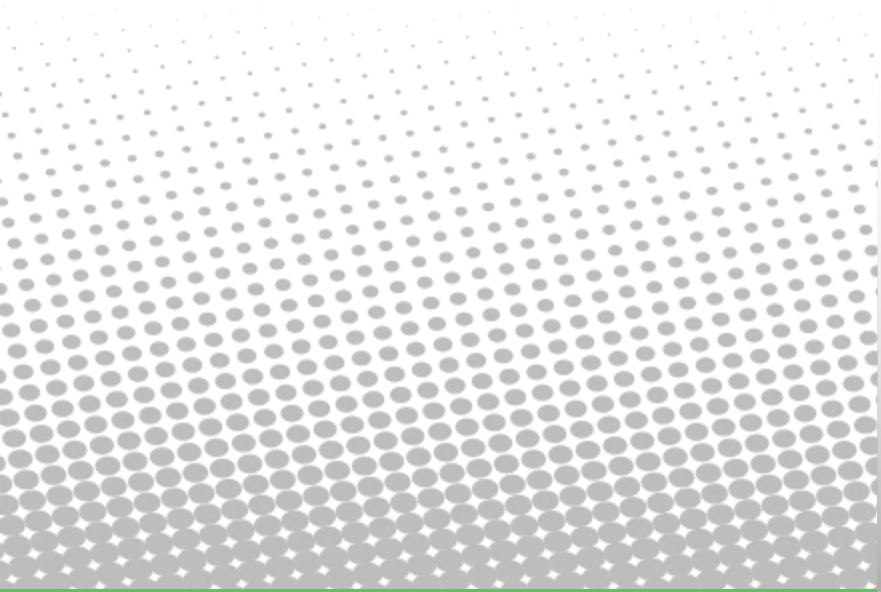
## 2025 Overview

- Access Infectious Disease & Primary Care Providers
- Extend clinic hours
- RW onsite CIED specialist
- Provided options for telehealth medical visits and behavioral health counseling
- Provide Uber Health-EHE for clients to attend appointments
- Increase appointments Behavioral Health Providers
- Bi-Weekly support groups(Adult Women)
- CAB meeting
- Daily huddles with medical care team
- Test and Treat services
- Worked in partnership with FDOH-BCHD to ensure that pregnant clients and exposed babies received medical care
- Mobile Health Unit Primary Care Services
- Onsite Pharmacy
- Nutritional Counseling

# Ryan White Part D- Notable Trends



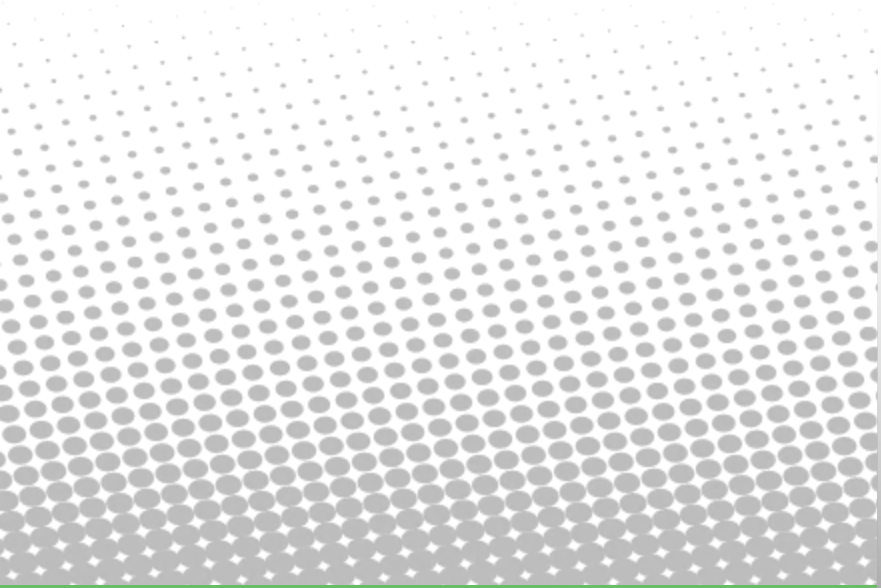
- Decrease in pregnant women
- Migrating to other states due to housing cost
- Retention in care increase for women over the age of 45
- Low wages with limitations of employment



# Ryan White Part D- Needs, Barriers, and Gaps



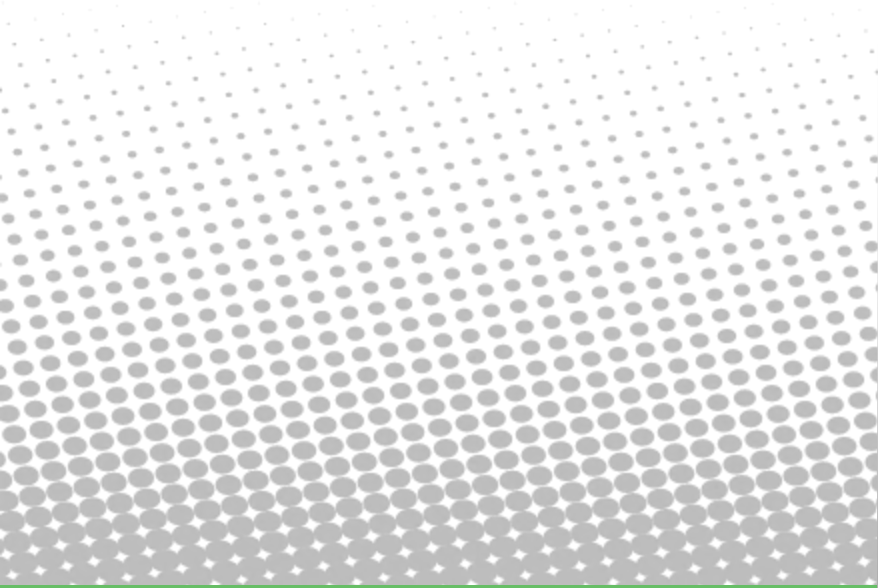
- Unaffordable housing
- Increase of unhoused clients
- Affordable childcare with extended hours
- Navigating ADAP changes
- Food Insecurity
- No increase in cost-of-living wages



# Ryan White Part D- Recommendations



- Limit forms for Ryan White Part A enrollment
- Emergency funds for housing cost needs
- Additional locations with extend hours for Ryan White Part A enrollment



***THANK YOU***

---



**BROWARD  
HEALTHPOINT**

# RYAN WHITE FUNDER'S PRESENTATION FOR PSRA

RYAN WHITE PART F 2025-2026



Broward County HIV Health Services Planning Council  
Broward County Health Care Services Ryan White Part A Program  
Broward County Board of County Commissioners  
Presented as of [insert date]

# RYAN WHITE PART F PROGRAM OVERVIEW

---

## **The Community-Based Dental Partnership Program (CBDPP)**

The CBDPP funds HIV oral health care and provider education and clinical training, especially those practicing in community-based settings. The CBDPP also increases access to oral health care services for low-income people with HIV.

Funded to eleven dental education programs in the United States

Part F also funds the **AIDS Education and Training Center (AETC)**. The Southeast AIDS Education and Training Center (SE AETC) is one of eight regional AETCs across the country. Encompassing Alabama, Florida, Georgia, Kentucky, Mississippi, North Carolina, South Carolina, and Tennessee, the SE AETC offers comprehensive, collaborative educational opportunities designed to increase the size and strength of the HIV clinical workforce, improve outcomes along the HIV Care Continuum, and reduce the number of new HIV infections.





Currently serves as the Dental Director

Provide: Training, Preceptorships, Webcasts

<https://www.seaetc.com/>



# PROGRAM BUDGET

---

Current funding through 6-30-2026 \$239,000 per year

Funding through 6-30-2028

Care Resource serves as our community partner in Broward County. Funds are used to support dental providers, support staff, and supplies for Care Resource. Senior dental students rotate through Care Resource Oakland dental site providing oral health care services to Patients with HIV (PWH) in interprofessional health care setting.



# SERVICES PROVIDED

---

Please list all the services provided by your program, including:

- Definition of the Services
- Client Eligibility: HIV+ Broward County (No income qualifications)
  
- 358 unduplicated clients (151 new)
- 210 males
- 118 female
- 131 Hispanic or Latino/a
- 235 Non-Hispanic or Latino/a
- 122 White
- 213 African American



# SERVICES PROVIDED

---

- Largest age group 55-64 followed by 25-34, 35-44,,45-54
- 346 at 200% or below the federal policy level

Services were provided mostly diagnostic, preventive, periodontic, restorative

- All patients receive oral hygiene instructions, tobacco cessations, and nutritional counseling.
- 7 patients from the Care Resource Dental Program tested positive for HIV.



# NEEDS, GAPS, BARRIERS TO CARE

---

NSU-CDM has been a Part F recipient for 15 years and the excellent collaboration with Care Resource has allowed not only an educational setting for our students, but the ability to integrate medical and oral health care in one location.

Need to additional funding. Amount is never increased over initial funding amount.



# NOTABLE TRENDS

---

Trend for increased patients with substance abuse issues

Increase of number of patients in the age group 25-34



# RECOMMENDATIONS: Partnership with Part A

---

- 1) Provides access to care for those unable to access or need supplement their Part A funds or provide uncovered procedures.
- 2) Increased funding



# QUESTIONS?

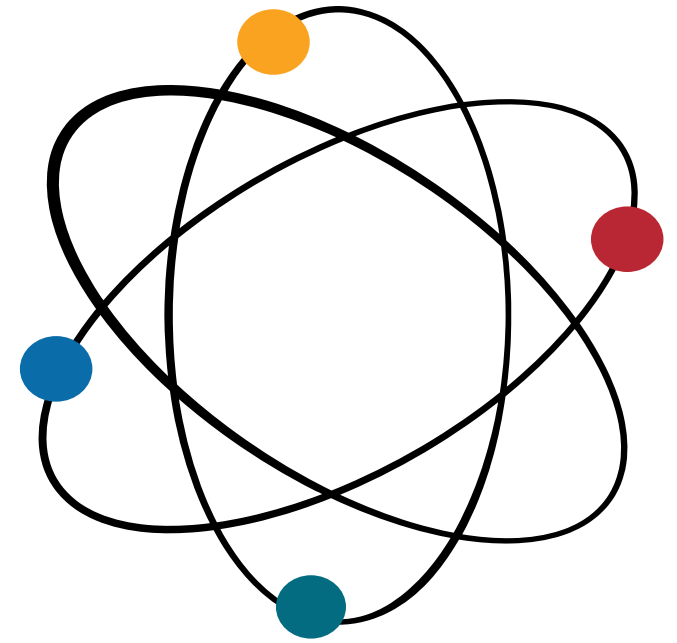
DISCUSSION





# Ending the HIV Epidemic

2026 PSRA Presentation





# Presentation Highlights





Part 1: Program Introduction

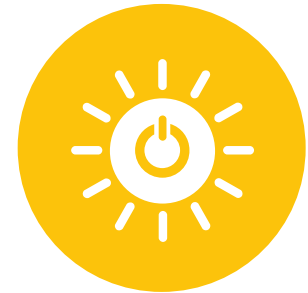
Part 2: Service Categories

Part 3: Advisory Board

Part 4: Utilization & Spending

# Introduction

	<b>Diagnose</b> all people with HIV as early as possible.
<b>Treat</b> people with HIV rapidly and effectively to reach sustained viral suppression.	
	<b>Prevent</b> new HIV transmissions by using proven interventions, including pre-exposure prophylaxis (PrEP) and syringe services programs (SSPs).
<b>Respond</b> quickly to potential HIV outbreaks to get needed prevention and treatment services to people who need them.	



Services are provided to all people with HIV with priority given to the populations below:

# Ending the HIV Epidemic



- **Persons newly diagnosed with HIV, or re-engaging back in care.**
- **PWH who have fallen out of medical care and need re-engagement.**
- **PWH currently in medical care but not virally suppressed.**
- **PWH who are in care, but at risk of falling out of care.**

Click on each Service for a detailed description

# EHE Funded Services



**Medical Case Management**



**Disease Intervention Specialists**



**Food Services**



**Medical Transportation**



**Non-Medical Case Management & Peer Counseling**



**Housing & Care Support Services**

- **Leads the multidisciplinary Intensive Care Teams**
- **Coordinated healthcare interventions**
- **Frequent assessment and client contact**

## Medical Case Management



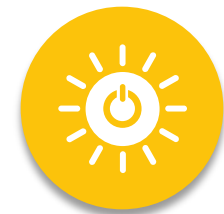
- **Outreach services designed to locate and re-engage clients who miss appointments or fall out of care.**
- **In coordination with the Florida Department of Health in Broward County.**

# Disease Intervention Specialists



- **Food Bank and Food Vouchers.**
- **Supplements Part A food service once cap reached.**

# Food Services



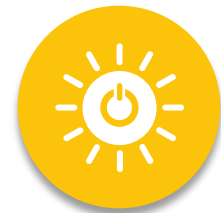
- **Ride share or taxi services designed to remove transportation barriers and help clients keep their appointments.**

# Medical Transportation



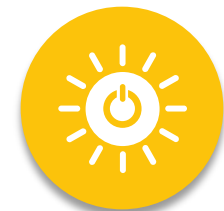
- **Designed to support the MCM and ICT in addressing EHE clients' psychosocial needs.**
- **Provides information and referral supporting treatment.**
- **Healthcare visit adherence, and other services.**

## **Non – Medical Case Management & Peer Support Services**



- EHE HCSS are client-centered interventions designed to work in concert with existing EHE and RW medical and non-medical services to address clients' unmet needs.
- Services include supportive housing, rent and utility payments, childcare services, mobile - phone access, vocational training, etc.

# Housing & Care Support Services (CSS)



# EHE Advisory Board

Interested in becoming a member?

Email: [Katrigenioconway@broward.org](mailto:Katrigenioconway@broward.org)



## 1 Mission

Working collaboratively to end the HIV epidemic through data-driven approaches, engaging diverse communities, increasing HIV education and stigma reduction, and supporting innovative holistic systems.



## 2 Purpose

The Advisory Board provides advice, recommendations, and support to Broward County's EHE program.



## 3 Background

Established March of 2023

Chair: Michael Greene

Vice-Chair: Kendra Hayes

Meeting Schedule: Bi - Monthly; Last Tuesday at 2:00 PM

Next Meeting: May 27, 2026

Subcommittees: Faith-Based

# Total Clients

EHE Service Utilization  
FY 2025 & FY 2024

Category	2025	2024
MCM	451	516
Non-MCM	577	662
Food Bank	1,281	1,776
Food Voucher	204	1,514
Medical Transportation	1,241	1,438
Housing & Care Support Services	427	315

# Total Services

EHE Service Utilization  
FY 2025 & FY 2024

Category	2025	2024
MCM	3,980	5,952
Non-MCM	4,137	5,905
Food Bank	2,900	8,976
Food Voucher	313	5,604
Medical Transportation	15,447	19,293
Housing & Care Support Services	5,043	4,049

# Total Expenditures

EHE Service Utilization  
FY 2025

Service Category	Total Spending
Medical Case Management	\$631,493.81
Food Bank	\$1,003,443.10
Food Voucher	\$653,747.95
Housing and Care Support Services	\$2,735,876.37
Medical Transportation	\$724,410.39
Non-Medical Case Management	\$757,909.79
Peer Education Counseling	\$34,516.63

# Thank You!

Does anyone have questions?

## Wismy Cius

Community Planner

[Wcius@broward.org](mailto:Wcius@broward.org)

(954) 357-5384

## Kristine Atrigenio - Conway

EHE Program Project Coordinator

[katrigenioconway@broward.org](mailto:katrigenioconway@broward.org)

(954) 357-5772

## Jessica Roy

Healthcare Services Section Administrator

[jeroy@broward.org](mailto:jeroy@broward.org)

(954) 357-5394



# HIV HEALTH SERVICES PLANNING COUNCIL MEETING GROUND RULES

1. The Council, its members, and the public recognize and respect the committee process adopted by this Council. The Council, its members, and the public recognize that full discussion and analysis of issues occurs at the committee level rather than at Council meetings.
2. Before a member can make a motion or speak in debate, the member must be recognized by the Chair as having the exclusive right to be heard at that time.
3. All speakers are expected to address the Council in a respectful manner to respect time limits, to speak briefly and to the point, and to stay on agenda. All other persons in attendance should not interrupt the speaker who is recognized by the Chair as having the floor.
4. If the member who made the motion claims the floor and has not already spoken on the question, that member is entitled to be recognized in preference to other members.
5. No person is entitled to the floor a second time in debate on the same item as long as any other person who desires the floor has not spoken on the item.
6. Speakers should restrict comments and debate to the pending question or motion. Speakers must address their remarks to the Chair and maintain a courteous tone. The Chair may impose time limits on debate or discussion to ensure efficient conduct of Council business.
7. Members should not name service providers and/or persons during any discussion unless the service provider or person is identified in the subject of the motion or agenda item. Specific concerns regarding service providers should be directed towards the Grantee, outside of the meeting.
8. Members of the public may only address the Council upon recognition by the Chair. They are subject to the same rules of conduct expected of Council members.
9. No alcohol or drug use (unless prescribed by a licensed physician), is permitted at Council meetings, grantee or support staff offices.
10. No abusive language, threats of violence, or possession of weapons are permitted in Council meetings, grantee or staff offices.
11. Repeated violation of these meeting rules may result in no further recognition of the offending member or attendee by the Chair at that meeting. Any serious breach of conduct which disrupts the Council's meeting may subject the offender to removal from the meeting, administrative or legal process.



# CONSEJO DE PLANEACIÓN DE SERVICIOS DE SALUD VIH

## REGLAS BÁSICAS DE LA REUNIÓN

1. Los miembros deberán aceptar y respetar el proceso de comité adoptado por este Consejo. Las discusiones y el análisis en pleno de los temas tendrán lugar a nivel de comité y no en las reuniones plenarias del Consejo.
2. Antes de que un miembro pueda iniciar una moción o de que una persona pueda hablar en un debate, el Presidente de la reunión deberá reconocer que él o ella tienen el derecho exclusivo de hablar en ese momento dado.
3. Se espera que todos los ponentes se dirijan al Consejo de una manera respetuosa, que no se interrumpa al ponente con derecho al habla en el momento, que cuando se hable se haga de forma clara y concisa, y que se mantenga la agenda.
4. Si el miembro que inicia una moción no ha hablado todavía y reclama su derecho a hablar sobre un asunto, él/ella tendrán el derecho a que con preferencia se les reconozca.
5. Nadie tendrá derecho a reclamar el habla por una segunda vez, en un debate sobre el mismo tema, cuando otra persona que no ha hablado todavía, desea hacerlo.
6. Los debates deben ceñirse a los asuntos o mociones que estén pendientes. Al hablar, los ponentes deben referirse al Presidente, y mantener un tono cortés.
7. Los miembros del público solo podrán dirigirse al Consejo cuando hayan sido reconocidos por el Presidente de la reunión. Estarán sujetos a las mismas reglas de conducta que se esperan de los miembros del Consejo. Se establecerán límites de tiempo según sea necesario para garantizar que los asuntos del Consejo cursen de manera eficiente.
8. Miembros del público sólo podrán dirigir el Consejo a partir del reconocimiento por el Presidente. Están sujetos a las mismas reglas de conducta que se espera de los miembros del Consejo.
9. No estará permitido el uso de bebidas alcohólicas o de drogas en las reuniones del Consejo y tampoco en las oficinas del personal de soporte y donatarios.
10. No está permitido el uso de lenguaje abusivo, amenazas de violencia y posesión de armas en las reuniones del Consejo ni en las oficinas del personal de soporte y donatarios.
11. La repetida violación de estas reglas básicas dará como resultado que el Presidente de la reunión deje de reconocer al derecho a participación del ofensor o miembro de la audiencia. Cualquier violación de conducta grave, que perturbe la reunión de Consejo, terminará en la remoción del ofensor, de la reunión.



# KONSÈY PLANIFIKASYON SÈVIS SANTE POU HIV RÈGLEMAN RANKONT-YO

1. Manm-yo dwe rekonèt epi respekte pwosesis komite-a ke Konsèy-la adopte. Diskisyon ak analiz total pwoblèm-yo fèt nan nivo komite-a; li pa fèt pandan rankont tout Konsèy-la.
2. Anvan yon manm ka fè yon pwopozisyon oswa nenpòt ki moun gen dwa pale pandan yon deba, fòk Prezidan Komite-a bali dwa esklizif pou fè moun tande-li nan moman sa-a.
3. Yo atann-yo aske tout moun k'ap pale ak Konsèy-la fè-li avèk respè, pou pèsonn pa koupe moun ke Konsèy-la bay dwa pale lapawòl, pou moun k'ap pale-a respekte kantite tan yo ba-li pou pale-a, pou li di sa l'ap di-a rapidman epi avèk presizyon, epi pou li respekte ajanda-a.
4. Si manm ki fè pwopozisyon-an mande pou li pale epi si li poko pale sou keksyon-an deja, li gen priyorite sou lòt manm-yo.
5. Pèsonn moun pa gen dwa pran lapawòl de fwa sou yon menm sijè si gen lòt moun ki poko pale epi ki vle esprime tèt-yo.
6. Deba-a dwe rete sou keksyon oswa pwopozisyon k'ap fèt-la. Moun k'ap pale-a dwe adrese sa l'ap di-a bay Prezidan Komite-a epi pale sou yon ton ki make ak respè.
7. Manm piblik-la dwe pale ak Konsèy-la sèlman si Prezidan Konsèy-la bay-yo lapawòl. Yo dwe respekte menm règleman kondwit avèk manm Konsèy-yo. Lè sa nesèsè pou zafè Konsèy-la byen mache, yo gen dwa bay-yo yon limit tan pou yo pale.
8. Manm nan piblik la sèlman pou adrese a konsèy sou rekonèsans sou chèz la. Yo ka tonbe anba menm lòd de kondwit ki te espere nan manm konsèy yo.
9. Itilizasyon alkòl ak dwòg (sòf si se yon doktè lisansye ki preskri-li), entèdi nan rankont Konsèy-la oswa nan biwo estaf sipò-a oswa Resevè-a.
10. Vye langaj, menas vyolans, oswa posesyon zam entèdi nan rankont Konsèy-la oswa nan biwo estaf-la oswa Resevè-a.
11. Vyolasyon repete règleman rankont-yo ap lakòz yon manm oswa lòt moun k'ap asiste rankont-lan pa kapab patisipe ankò. Nenpòt ki move kondwit serye ki twouble rankont-la ap lakòz yo mete moun-nan deyò.



## Acronym List

**ACA:** The Patient Protection and Affordable Care Act

**ADAP:** AIDS Drugs Assistance Program

**Administration HUD:** U.S Department of Housing and Urban Development

**IW:** Integrated Workgroup

**AETC:** AIDS Education and Training Center

**AHF:** AIDS Health Care Foundation

**AIDS:** Acquired Immuno-Deficiency Syndrome

**ART:** Antiretroviral Therapy

**ARV:** Antiretrovirals

**BARC:** Broward Addiction Recovery Center

**BCFHC:** Broward Community and Family Health Centers

**BH:** Behavioral Health

**BRHPC:** Broward Regional Health Planning Council, Inc.

**CBO:** Community-Based Organization

**CDC:** Centers for Disease Control and Prevention

**CDTC:** Children's Diagnostic and Treatment Center

**CEC:** Community Empowerment Committee

**CIED:** Client Intake and Eligibility Determination

**CLD:** Client Level Data

**CQI:** Continuous Quality Improvement

**CQM:** Clinical Quality Management

**CTS:** Counseling and Testing Site

**eHARS:** Electronic HIV/AIDS Reporting System

**EIHA:** Early Intervention of Individuals Living with HIV/AIDS

**EFA:** Emergency Financial Assistance

**EMA:** Eligible Metropolitan Area

**FDOH:** Florida Department of Health

**FPL:** Federal Poverty Level

**FQHC:** Federally Qualified Health Center

**HAB:** HIV/AIDS Bureau

**HHS:** U.S. Department of Health and Human Services

**HICP:** Health Insurance Continuation Program

**HIV:** Human Immunodeficiency Virus

**HIV HSSS:** HIV Human Services Software System

**HIVPC:** Broward County HIV Health Services Planning Council

**HOPWA:** Housing Opportunities for People with AIDS

**HRSA:** Health Resources Services Administration

**IDU:** Intravenous Drug User

**JLP:** Jail Linkage Program

**LPAP:** Local AIDS Pharmaceutical Assistance Program

**MAI:** Minority AIDS Initiative

**MCDC:** Membership/Council Development Committee

**MCM:** Medical Case Management

**MH:** Mental Health

**MNT:** Medical Nutrition Therapy



**MOU:** Memorandum of Understanding

**NBHD:** North Broward Hospital District (Broward Health)

**NGA:** Notice of Grant Award

**NHAS:** National HIV/AIDS Strategy

**NMCM:** Non-Medical Case Management

**NOFO:** Notice of Funding Opportunity

**nPEP:** Non-Occupational Post Exposure Prophylaxis

**NSU:** Nova Southeastern University

**nPEP:** Non-occupational Post-Exposure Prophylaxis

**OAHS:** Outpatient Ambulatory Health Services

**OHC:** Oral Health Care

**PCN:** Policy Clarification Notice

**PE:** Provide Enterprise

**PLWH:** People Living with HIV

**PLWHA:** People Living with HIV/AIDS

**PrEP:** Pre-Exposure Prophylaxis

**PRISM:** Patient Reporting Investigating Surveillance System

**PROACT:** Participate, Retain, Observe, Adhere, Communicate and Teamwork is DOH- Broward's treatment adherence program.

**PSRA:** Priority Setting & Resource Allocations

**QI:** Quality Improvement

**QIP:** Quality Improvement Project

**QM:** Quality Management

**QMC:** Quality Management Committee

**RSR:** Ryan White Services Report

**RWHAP:** Ryan White HIV/AIDS Program

**RWPA:** Ryan White Part A

**SBHD:** South Broward Hospital District (Memorial Healthcare System)

**SCHIP:** State Children's Health Insurance Program

**SDM:** Service Delivery Model

**SOC:** System of Care

**SPNS:** Special Projects of National Significance

**STD/STI:** Sexually Transmitted Diseases or Infection

**TA:** Technical Assistance

**TB:** Tuberculosis

**TGA:** Transitional Grant Area

**VA:** United States Department of Veteran Affairs

**VL:** Viral Load

**VLS:** Viral Load Suppression

**WICY:** Women, Infants, Children, and Youth



## Frequently Used Terms

**Recipient:** Government department designated to administer Ryan White Part A funds and monitor contracts.

**Planning Council Support (PCS) Staff/‘Staff’:** Provides professional staff support, meeting coordination, and information to the HIVPC, its standing and ad-Hoc Committees, Chair, and Recipient.

**Clinical Quality Management (CQM) Support Staff:** Provides professional support, meeting coordination, and technical assistance to assist the Recipient through analysis of performance measures and other data with the implementation of activities designed to improve patient care, health outcomes, and patient satisfaction throughout the system of care.

**Provider/Sub-Recipient:** Agencies contracted to provide HIV Core and Support services to consumers.

**Consumer/Client/Patient:** A person who is an eligible recipient of services under the Ryan White Act.